

# Anti-IL13RA2 hlgG1 Antibody (61H8C1)

## Product information

GM-86015AB-10	10 µg
GM-86015AB-100	100 µg
GM-86015AB-1000	1 mg

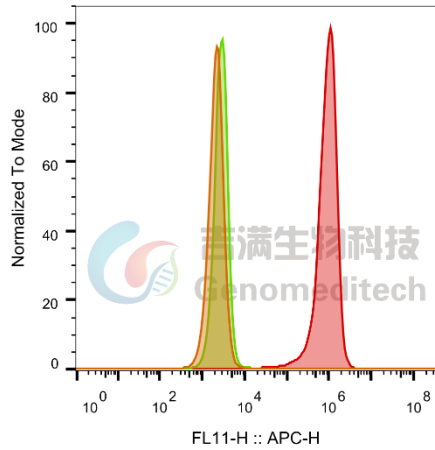
## Antibody Information

Species Reactivity	Human;
Clone	61H8C1
Source/Isotype	Monoclonal human IgG1, κ
Application	Flow cytometry
Specificity	Detects IL13RA2
Gene	IL13RA2
Other Names	CD121A, D2S1473, IL-1R-alpha, IL1R, IL1RA, P80
Gene ID	3598(human)
Background	Interleukin-13 receptor subunit alpha-2 (IL-13Rα2), also known as CD213A2 (cluster of differentiation 213A2), is a membrane bound protein that in humans is encoded by the IL13RA2 gene. IL-13Rα2 is closely related to IL-13Rα1, a subunit of the interleukin-13 receptor complex. This protein binds IL13 with high affinity, but lacks any significant cytoplasmic domain, and does not appear to function as a signal mediator. It is, however, able to regulate the effects of both IL-13 and IL-4, despite the fact it is unable to bind directly to the latter. It is also reported to play a role in the internalization of IL13. IL-13Rα2 has been found to be over-expressed in a variety of cancers, including pancreatic, ovarian, melanomas, and malignant gliomas.
Storage	Store at 2-8°C short term (1-2 weeks).Store at ≤ -20°C long term. Avoid repeated freeze-thaw.
Formulation	Phosphate-buffered solution, pH 7.2.
Endotoxin	< 1 EU/mg, determined by LAL gel clotting assay

## Data Examples

### Flow cytometry

The recommended usage range is 0.5-4  $\mu\text{g}$  per test. H\_IL13RA2 HEK-293 Cell Line (Catalog # GM-C06730) was stained with Anti-IL13RA2 hlgG1 Antibody (61H8C1) (Catalog # GM-86015AB) or isotype control antibody, followed by anti-Human IgG APC-conjugated Secondary Antibody.



SampleID	Geometric Mean : FL11-H
HEK-293 anti-IL13RA2+APC-2nd Ab	2119
HEK-293 H_IL13RA2 H_IgG+APC-2nd Ab	2800
HEK-293 H_IL13RA2 anti-IL13RA2+APC-2nd Ab	8.60E5

Fig. FACS